

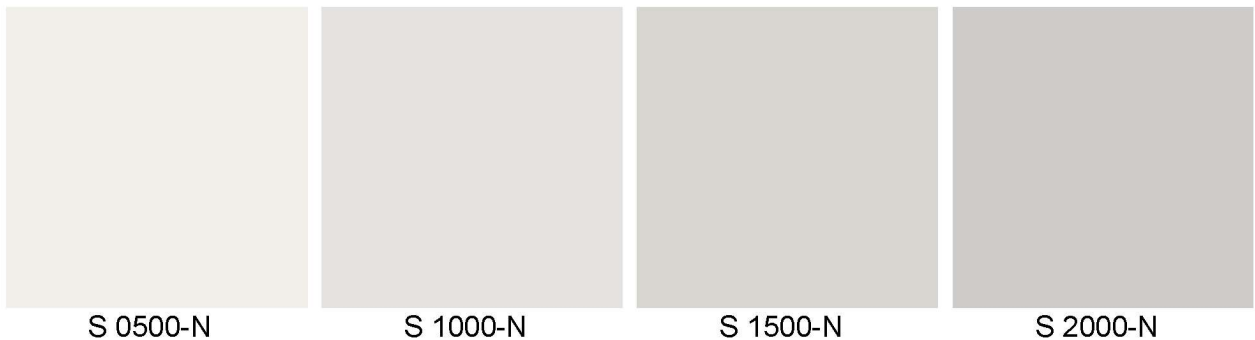
Anlage 2.7 zur BV 225 / 21

Fassadenfarben

Mindestens 80% der Putz- und Natursteinfassaden sind in hellen natürlichen Farben auszubilden.

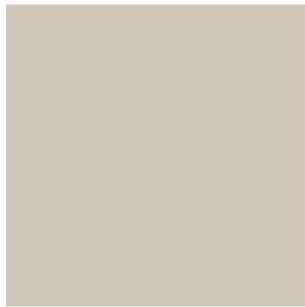
Als helle, natürliche Farben werden nach Natural Color System – NCS wie folgt fest-gesetzt:

- 1. reines Grau mit einem Schwarzanteil von mindestens 5 % und höchstens 20 %**



2. Farben aus dem Farbbereich von Gelb bis Gelbrot mit einem Schwarzanteil von mindestens 5 % und höchstens 20 % und einem Buntanteil von höchstens 10 %, wobei der Buntanteil geringer als der Schwarzanteil sein muss.

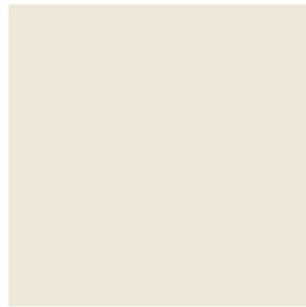




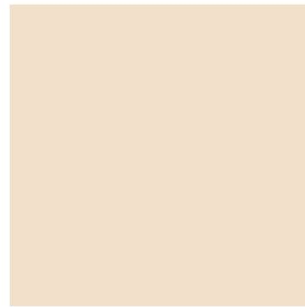
S 2002-Y20R



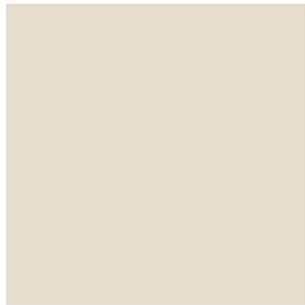
S 2010-Y20R



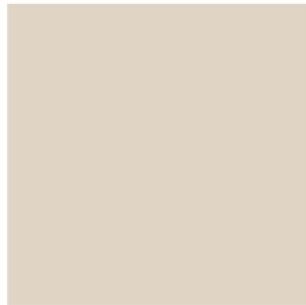
S 0804-Y30R



S 0907-Y30R



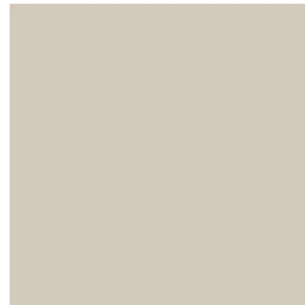
S 1005-Y30R



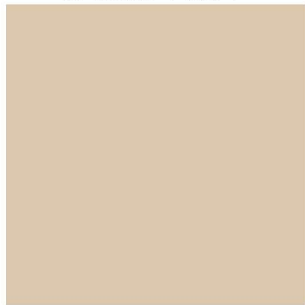
S 1505-Y30R



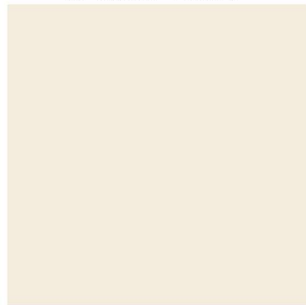
S 1510-Y30R



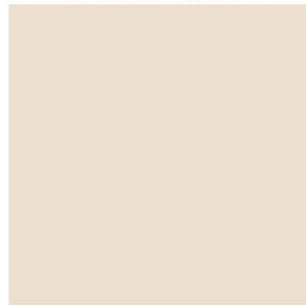
S 2005-Y30R



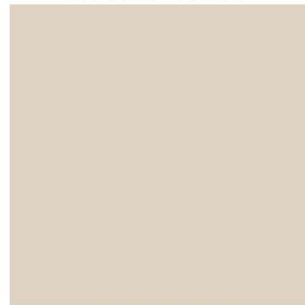
S 2010-Y30R



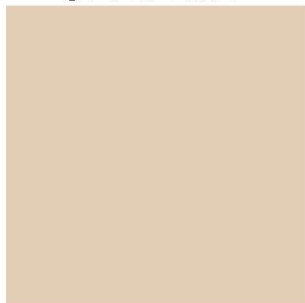
S 0603-Y40R



S 1005-Y40R



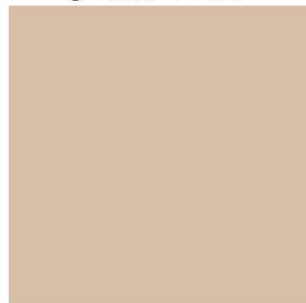
S 1505-Y40R



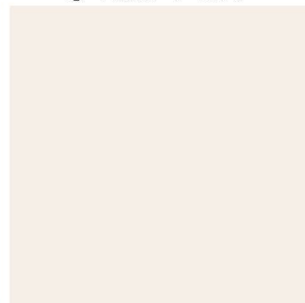
S 1510-Y40R



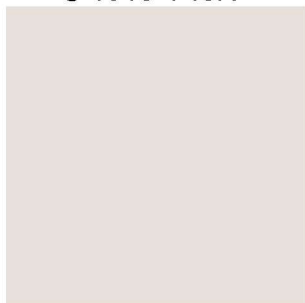
S 2005-Y40R



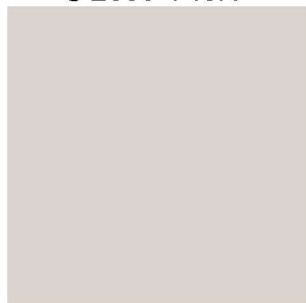
S 2010-Y40R



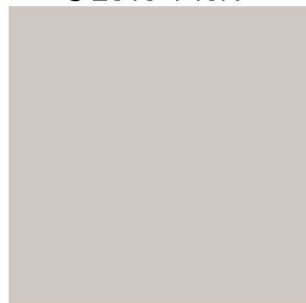
S 0502-Y50R



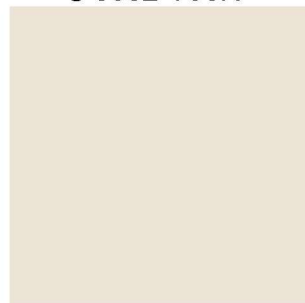
S 1002-Y50R



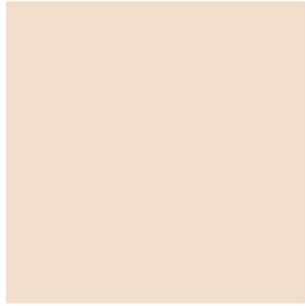
S 1502-Y50R



S 2002-Y50R



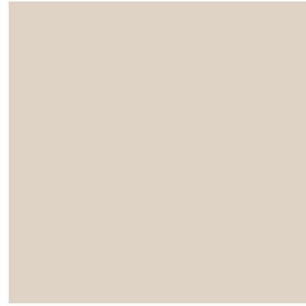
S 0804-Y50R



S 0907-Y50R



S 1005-Y50R



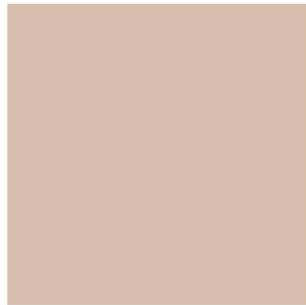
S 1505-Y50R



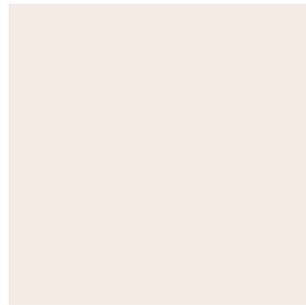
S 1510-Y50R



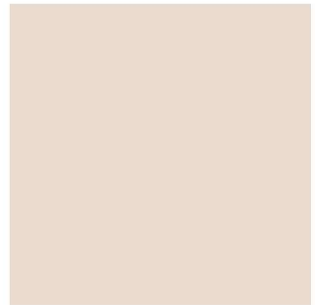
S 2005-Y50R



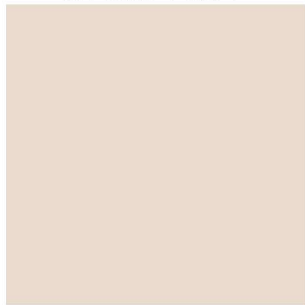
S 2010-Y50R



S 0603-Y60R



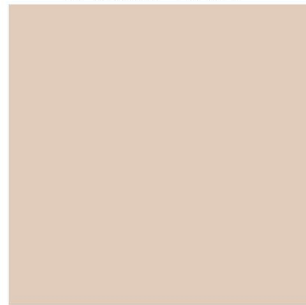
S 0603-Y60R



S 1005-Y60R



S 1505-Y60R



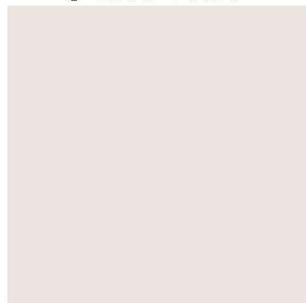
S 1510-Y60R



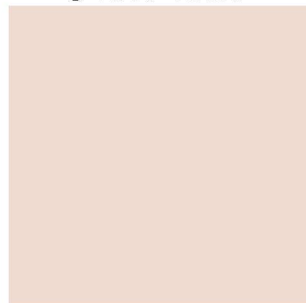
S 2005-Y60R



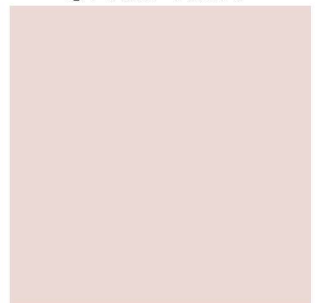
S 2010-Y60R



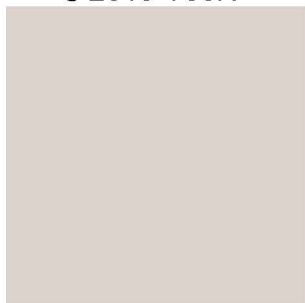
S 0804-Y70R



S 0907-Y70R



S 1005-Y70R



S 1505-Y70R



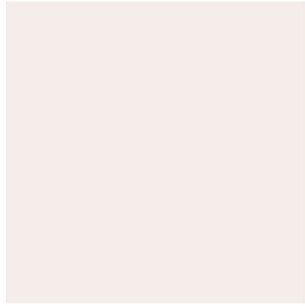
S 1510-Y70R



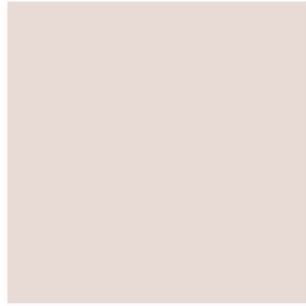
S 2005-Y70R



S 2010-Y70R



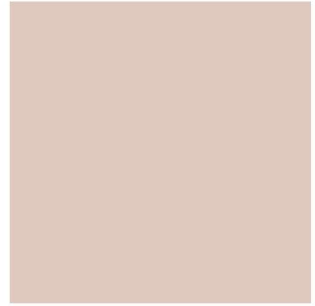
S 0603-Y80R



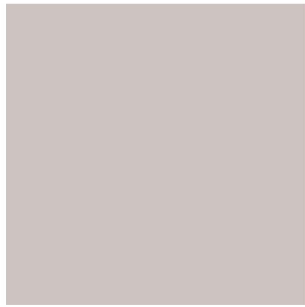
S 1005-Y80R



S 1505-Y80R



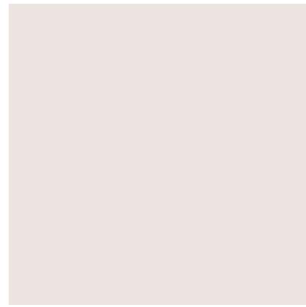
S 1510-Y80R



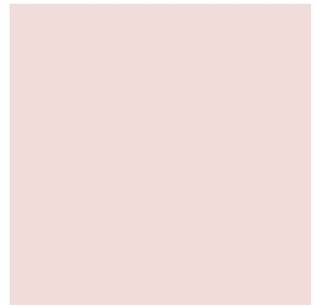
S 2005-Y80R



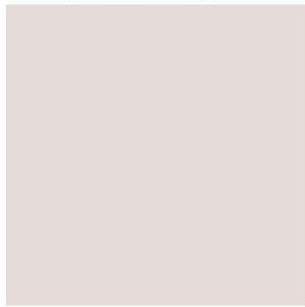
S 2010-Y80R



S 0804-Y90R



S 0907-Y90R



S 1005-Y90R



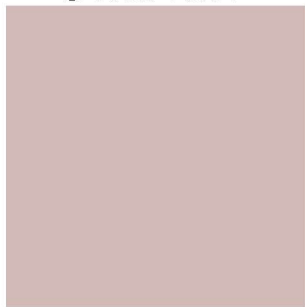
S 1505-Y90R



S 1510-Y90R



S 2005-Y90R



S 2010-Y90R

3. Farben aus dem Farbbereich von Grüngelb (Gelbanteil mindestens 60%) mit einem Schwarzanteil von mindestens 5 % und höchstens 20 % und einem Buntanteil von höchstens 10 %, wobei der Buntanteil geringer als der Schwarzanteil sein muss.





S 2005-G90Y



S 2010-G90Y